

● Water Bottle Refill Station

● Standard Water Fountain

DWG. NO.:

A-0

BLDG. CODE:

NA

REVISION DATE:

08-22-2018

SCALE:

NTS

DESIGN BY:

PLA

CHECKED BY:

JCD

RECORD FLOOR PLAN
NANTICOKE HALL

BASEMENT FLOOR PLAN

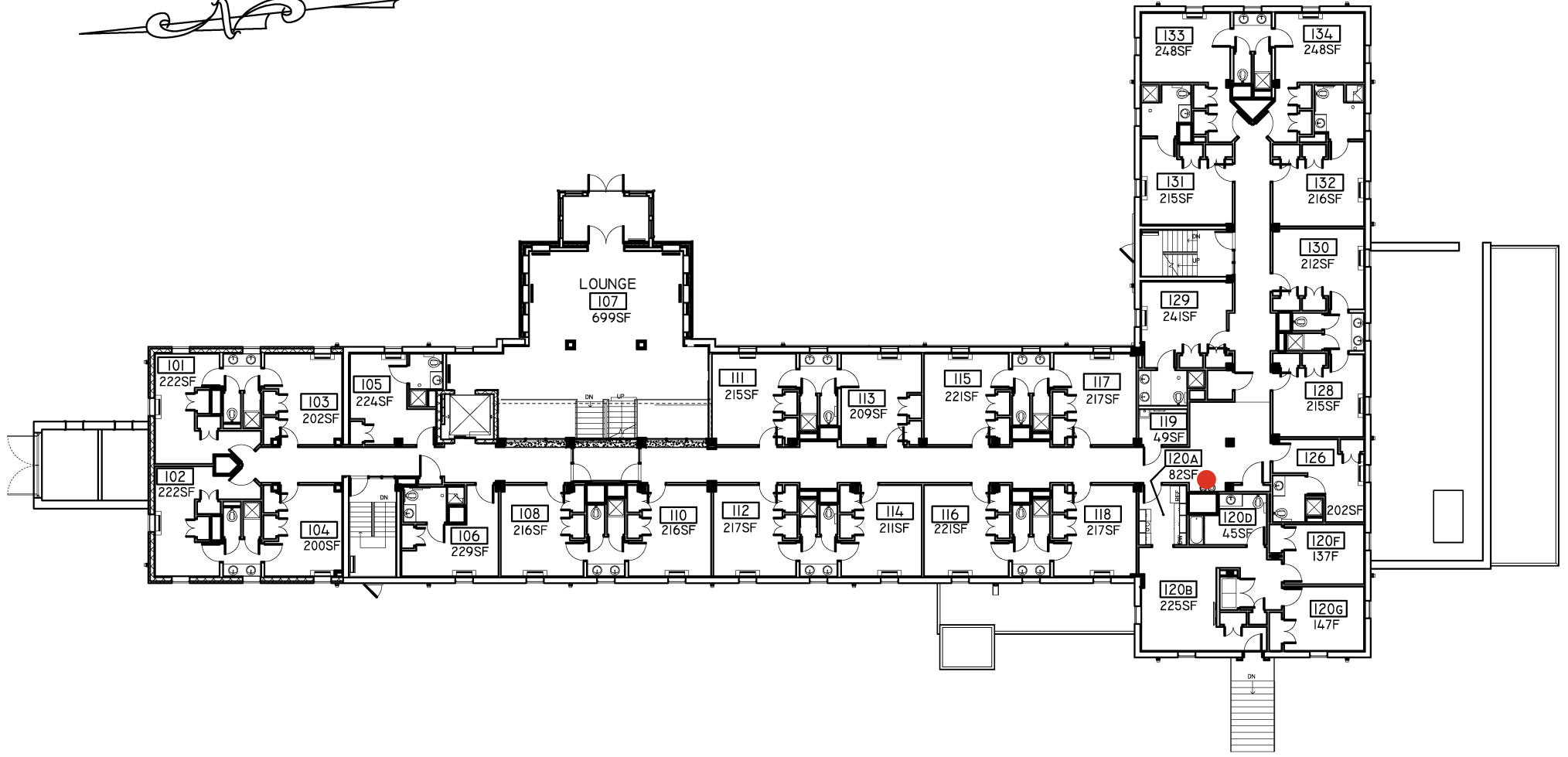
SALISBURY UNIVERSITY

FACILITIES PLANNING & CAPITAL PROJECTS
ARCHITECTURAL AND ENGINEERING SERVICES

1101 CAMDEN AVENUE

SALISBURY, MARYLAND 21801

410 - 543 - 6215



● Water Bottle Refill Station

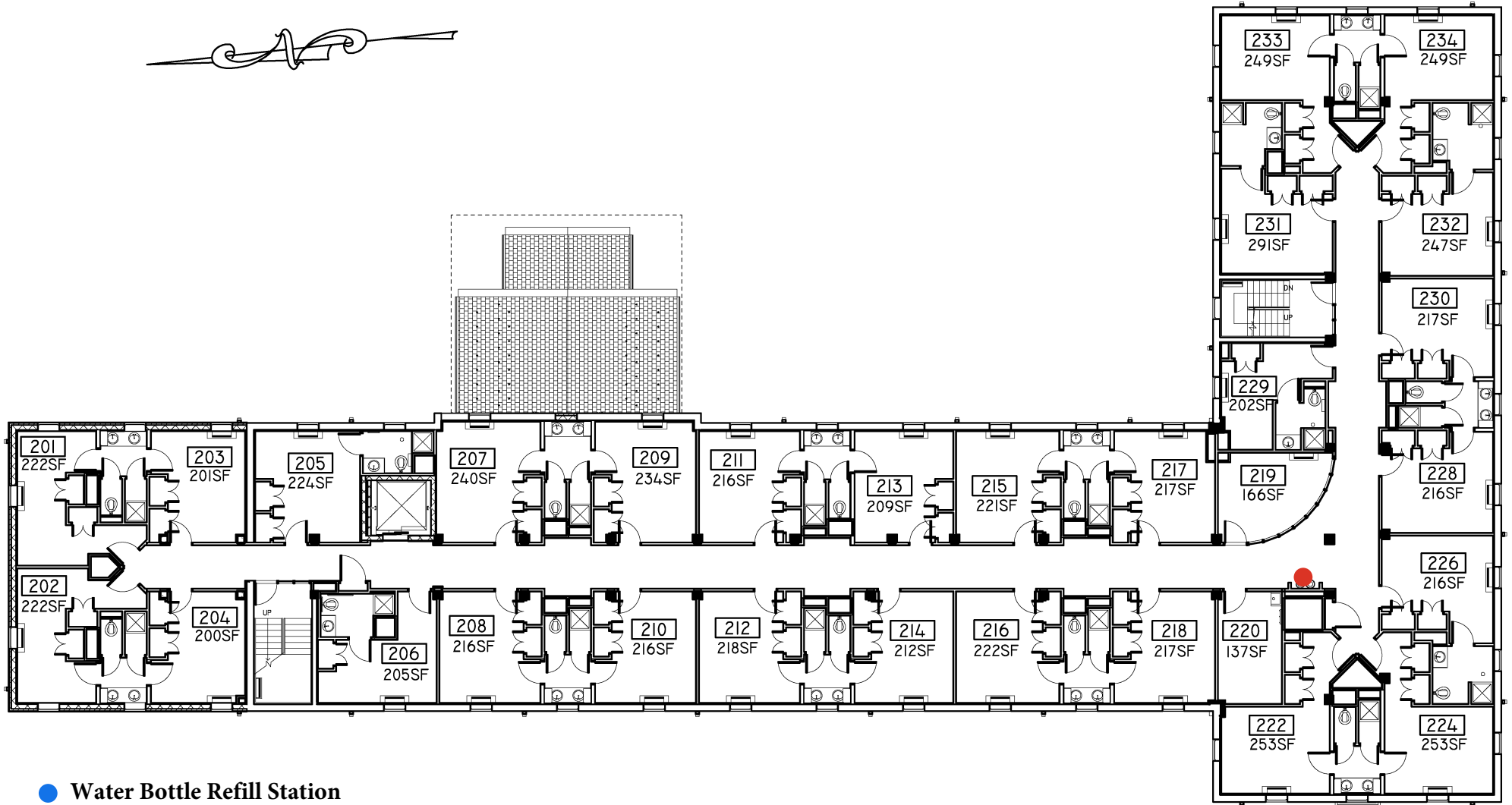
● Standard Water Fountain

DWG. NO.:	REVISION DATE:
A-1	08-22-2018
BLDG. CODE:	SCALE:
NA	NTS
	DESIGN BY:
	PLA
	CHECKED BY:
	JCD

RECORD FLOOR PLAN
NANTICOKE HALL

FIRST FLOOR PLAN

SALISBURY UNIVERSITY
 FACILITIES PLANNING & CAPITAL PROJECTS
 ARCHITECTURAL AND ENGINEERING SERVICES
 1101 CAMDEN AVENUE
 SALISBURY, MARYLAND 21801
 410 - 543 - 6215



● Water Bottle Refill Station

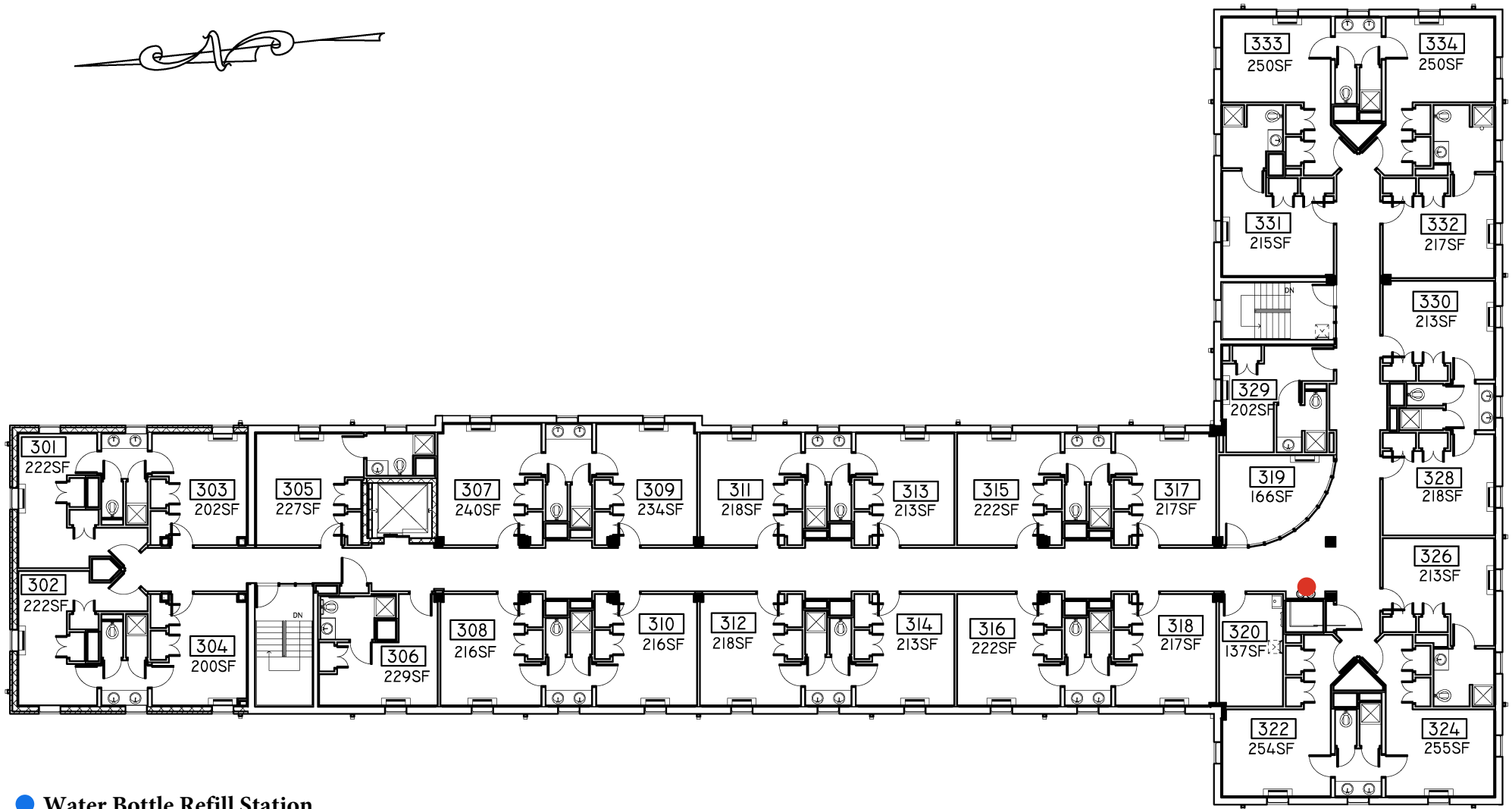
● Standard Water Fountain

DWG. NO.:	REVISION DATE:
A-2	08-22-2018
BLDG. CODE:	SCALE:
NA	NTS
	DESIGN BY:
	PLA
	CHECKED BY:
	JCD

RECORD FLOOR PLAN
NANTICOKE HALL

SECOND FLOOR PLAN

SALISBURY UNIVERSITY
FACILITIES PLANNING & CAPITAL PROJECTS
ARCHITECTURAL AND ENGINEERING SERVICES
1101 CAMDEN AVENUE
SALISBURY, MARYLAND 21801
410 - 543 - 6215



● Water Bottle Refill Station

● Standard Water Fountain

DWG. NO.:	REVISION DATE:
A-3	08-22-2011
BLDG. CODE:	SCALE:
NA	NTS
	DESIGN BY:
	PLA
	CHECKED BY:
	JCD

RECORD FLOOR PLAN
NANTICOKE HALL

THIRD FLOOR PLAN

SALISBURY UNIVERSITY
 FACILITIES PLANNING & CAPITAL PROJECTS
 ARCHITECTURAL AND ENGINEERING SERVICES
 1101 CAMDEN AVENUE
 SALISBURY, MARYLAND 21801
 410 - 543 - 6215